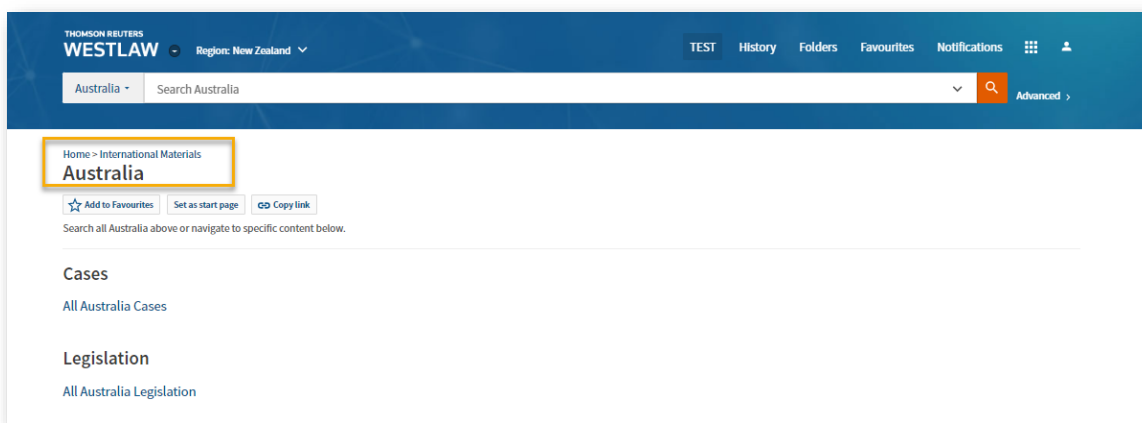


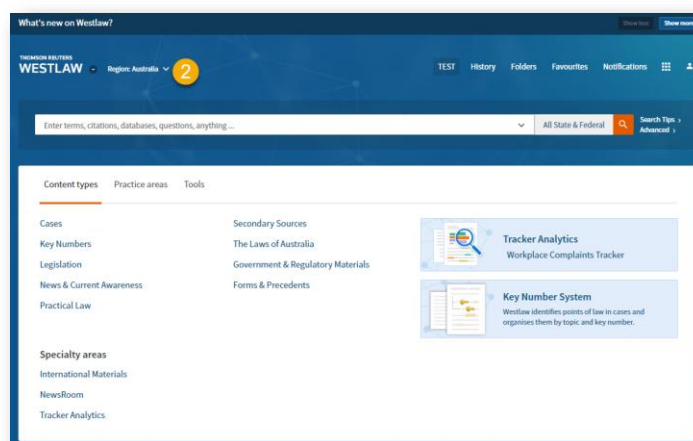
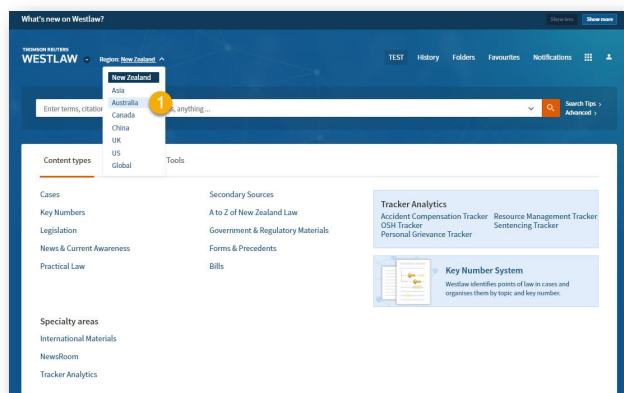
Accessing Australian Content on Westlaw New Zealand

As part of the August release, we are introducing a new way to access Australian content in new Westlaw New Zealand.

1. If you currently subscribe to Australian content and select Australia from the region drop-down menu, you will be redirected to the Westlaw Australia site. This will allow you to access the full functionality of Australian content including browsing, table of contents, deep-links and more. The Australia site access will be granted automatically, you will not need additional credentials.
- **OLD:**
Previously when you click on Australia in the region dropdown menu, you are taken to the Australia page in the International Materials section within Westlaw New Zealand, and you can only run search to find a document.

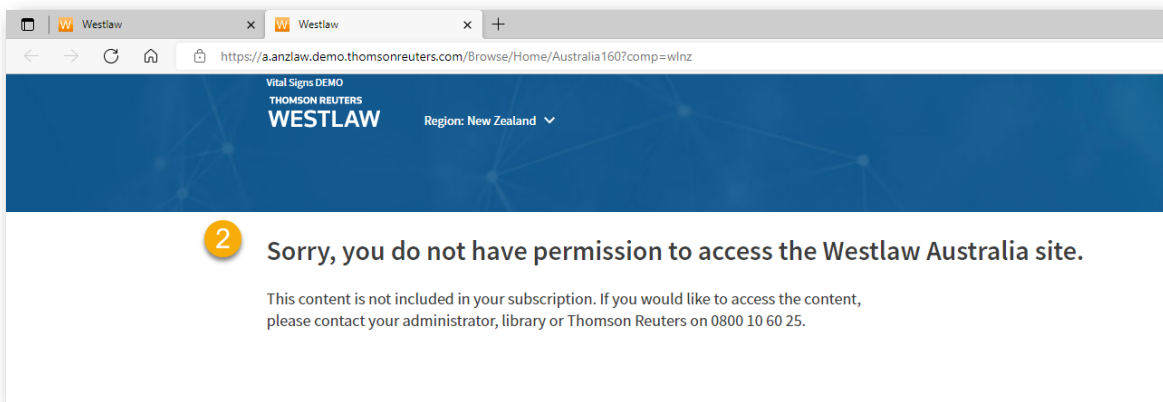
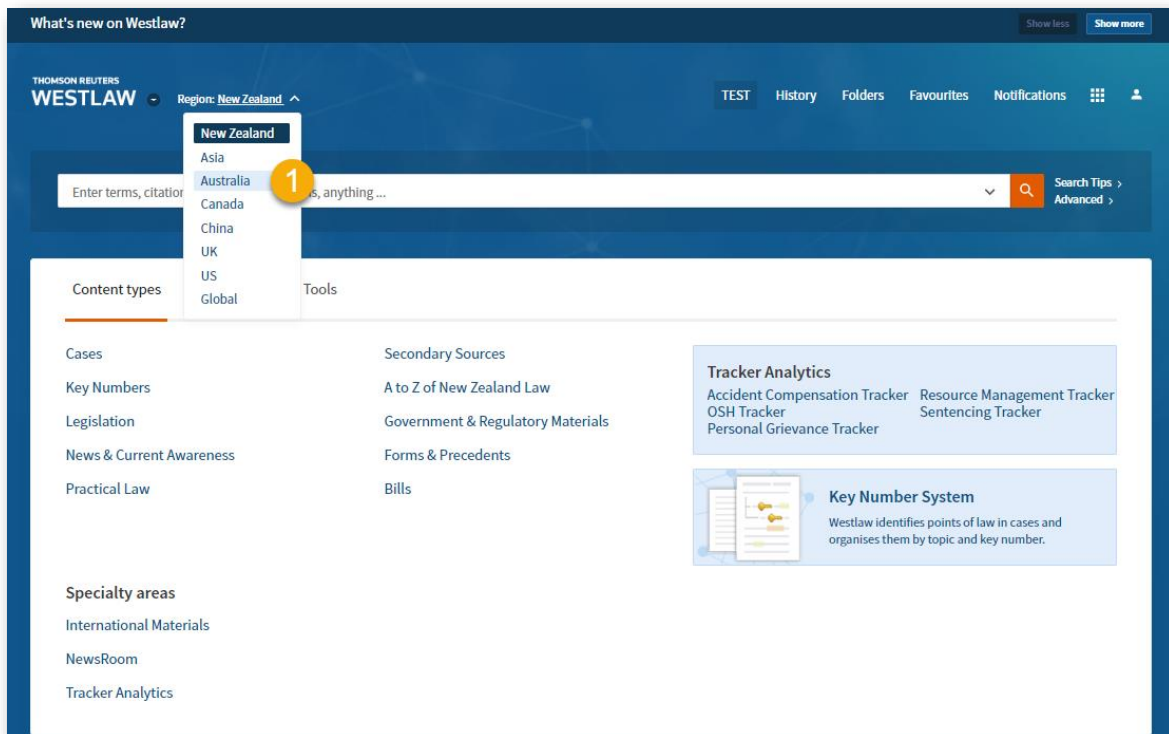


- **NEW:**
You will now be redirected to the Australia site.



2. If you do not subscribe to Australian content, you will get the below pay-per-view message saying that you do not have a permission to access the Australia site.

- New



Help and Support

Need more information about how to research within Westlaw New Zealand? Visit our [Customer Portal](#) to access User Guides, How to Videos, Tips and complimentary Webinars.